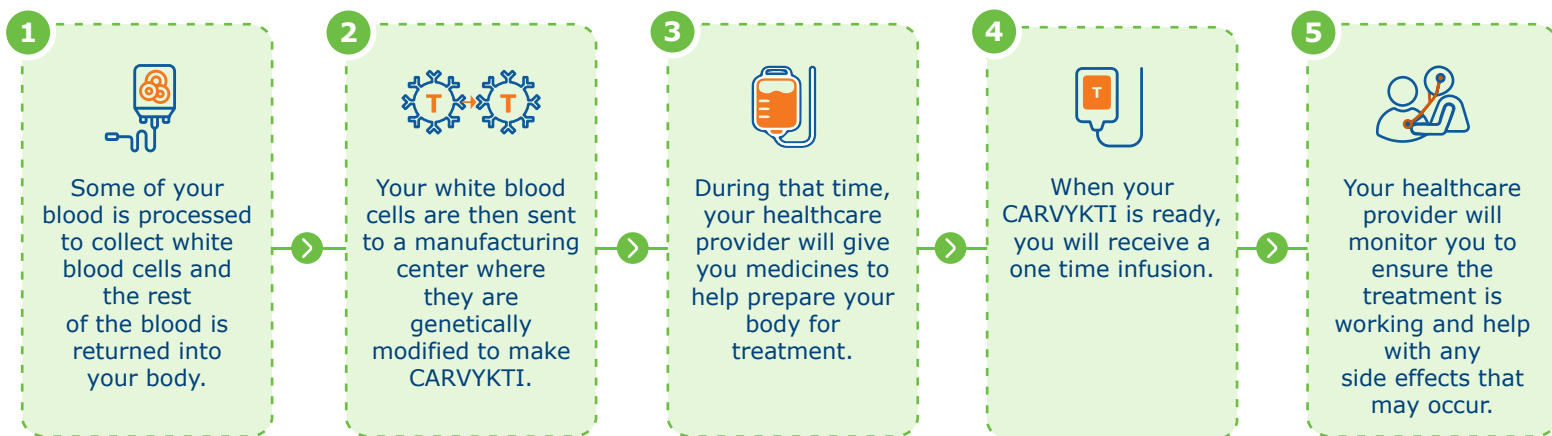


# CARVYKTI® (ciltacabtagene autoleucel)

## How Will I Receive CARVYKTI?

### Overview

The process of receiving CARVYKTI involves 5 major steps:

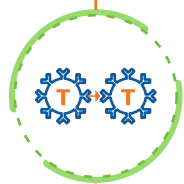


### How CARVYKTI is Made

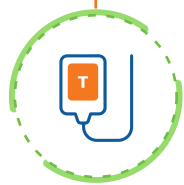
CARVYKTI is made from your own white blood cells. They are collected by a process called leukapheresis (loo-kah-fur-ee-sis).



Only your white blood cells are collected.



Your white blood cells are then sent to a manufacturing center where they are genetically modified to make CARVYKTI.



Your healthcare provider will receive your dose of CARVYKTI in 1 infusion bag.

Your blood and its other components are returned to your body



# CARVYKTI® (ciltacabtagene autoleucel)

## How Will I Receive CARVYKTI?

### Treatment Steps and Timeline

#### Step 1

##### Preparation of Your Cells



##### Collection of Your Cells

The procedure to collect your white blood cells can take **3 to 6 hours** and may need to be repeated.

##### Genetic Modification of Your White Blood Cells

It takes about **4 to 5 weeks** from the time your cells are received at the manufacturing site and are ready to be shipped back to your healthcare provider, but time may vary.

#### Step 2

##### Preparation of Your Body



##### Pretreatment

While CARVYKTI is being made, you may get **other medicines to treat the multiple myeloma**, so that it does not get worse.

Before you receive CARVYKTI, your healthcare provider will give you chemotherapy for **3 days** to prepare your body.

CARVYKTI will be administered **2 to 4 days** after receiving this chemotherapy.

##### Premedication

About **30 to 60 minutes** before you receive CARVYKTI, you may be given other medicines, including medicines for:

- An **allergic reaction** (anti-histamines)
- **Fever** (such as acetaminophen)

#### Step 3

##### One-Time CARVYKTI Infusion



##### Infusion Duration

Your healthcare provider will give you your dose of CARVYKTI through an intravenous (IV) infusion placed into your vein at a certified healthcare facility.

The single infusion usually takes about **30 to 60 minutes**.

#### Step 4

##### Monitoring After Infusion



##### Monitoring Duration

You will be monitored at the certified healthcare facility for at least **10 days** after receiving your CARVYKTI infusion.

##### Side Effects

Your healthcare provider will:

- Check to see that your treatment is working
- Help you with any potential side effects

If you develop serious side effects, you may be hospitalized until they are under control and you can safely leave the hospital.

##### Blood Tests

It is important that you have your blood tested to follow your progress. If you miss an appointment, call your healthcare provider as soon as possible to reschedule.

This information is provided ONLY in response to your request and is not intended as medical advice, to promote the use of our product, or suggest using it in any manner other than as described in the PRESCRIBING INFORMATION. All decisions regarding your medical treatment should be made with your healthcare professional(s). Please contact your healthcare professional(s) to discuss the information in this response.

Please refer to the attached full PRESCRIBING INFORMATION and the PATIENT MEDICATION GUIDE for CARVYKTI.<sup>1</sup>

1. CARVYKTI® (ciltacabtagene autoleucel). Prescribing Information. Janssen Biotech, Inc. Accessed date May 17, 2024. <https://www.janssenlabels.com/package-insert/product-monograph/prescribing-information/CARVYKTI-pi.pdf>.